

# ORIENTAL TANKS

## COMPANY INTRODUCTION

Oriental Tanks Pte Ltd

29 International Business Park  
#01-01 Acer Building  
Singapore 609923

Tel (+65) 6763-7032 / Fax (+65) 6227-4224

# ORIENTAL TANKS

## LEVERAGING 40+ YEARS OF EXPERTISE IN BULK LIQUID LOGISTICS.

Oriental Tanks provides end-to-end bulk liquid logistics and custom ISO tank solutions across Southeast Asia, supported by full lifecycle project services.

### SYNERGETIC PARTNERSHIP: GEA

Joint development supported by world-class quality standards.



INNOVATION



SUSTAINABILITY/ESG



COST OPTIMIZATION

SINGAPORE HQ | INDONESIA | MALAYSIA | PHILIPPINES | THAILAND

### OUR CUSTOMERS - TRUSTED BY INDUSTRY LEADERS



FOOD GRADE & SPECIALITY LIQUID ISO TANK CONTAINERS | Reusable Stainless Steel | ISO Standard | Multimodal Transport



## **HIDEYUKI UENO, CHAIRMAN**

- BS Physics, Professor at NTU, Hokkaido Tourism Ambassador.
- Over 40 years shaping the future of bulk liquid logistics across Asia
- Pioneering force behind Asia's ISO tank container supply chain evolution



## **YOHEI UENO, MANAGING DIRECTOR**

- BS in Aerospace Engineering & Business Entrepreneurship
- 13 years driving innovation in the bulk liquid logistics sector
- Former derivatives trader at JPMorgan with 7 years of financial expertise



## ISO Tank Containers

- **Durable, fully reusable** stainless steel pressure vessels designed to transport liquids in **bulk**.
- Built **within standardized ISO frame dimensions**, allowing compatibility with global container handling systems.
- Enable seamless **multi-modal transport**—by **sea, rail, and road**.
- Proven **safe, reliable, and efficient** with reduced waste and **lower carbon footprint**.
- Drive **significant cost savings** by transporting in bulk (**over 20,000L per tank**).



Single-Use Packaging



High Waste Generation



## Turning "Unshippable" into "Shippable"



R&D

Manufacturing

Logistics Services

Operations

Maintenance



Reefer Tank with Cooling System



Large-Capacity Square Tank



Vertical Chocolate Tank with E-Heating



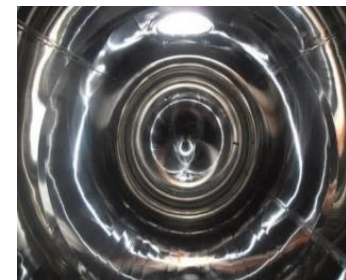
Rapid Heating/E-Heat Square Tank

# **CUSTOM-DESIGNED TANK EXAMPLES**



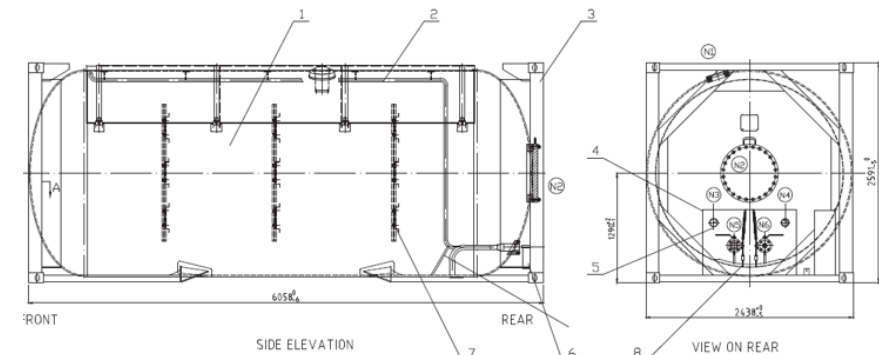
## Built-In Refrigeration & Hygienic Design

- **Built-in refrigeration unit** to keep cargo chilled at a precise temperature.
- Maintains **constant set temperature of +/- 0.1 °C** during transport and records the temperature trend in its **dedicated data logger system**.
- **Thick PU insulation** to minimize heat loss.
- **CIP shower ball cleaning system**.
- **Mirror polished surface** for reduced improved hygiene and cleaning effectiveness.



## Cryogenic CO<sub>2</sub> ISO Tank – Built for Safety and Performance

- **Multi-layer insulation with vacuum jacket** ensures minimal temperature loss
- **Stainless steel inner vessel** with **corrosion-resistant outer shell**
- Designed for **cryogenic CO<sub>2</sub> transport at –20°C to –40°C** and high pressure
- **Global intermodal compatibility:** optimized for sea, rail, and road transport
- **Low boil-off rate** for extended holding time during storage or transit
- Suitable for **food-grade CO<sub>2</sub>, industrial, and beverage applications**



## Heat-Controlled ISO Tank Solutions

- **Integrated heating cables** provide precise temperature control during transport
- Maintains target temperature with **±2 °C accuracy**
- Ideal for transporting liquid products that **solidifies at ambient temperature**
- Zones can be **independently heated** and **remotely managed via GSM**
- **Insulated body** minimizes heat loss and **saves energy**



### HEATING CABLE

High chemical and mechanical resistance cable with professional wiring design.



### CONTROL CABINETS

Highly reliable, easy to operate and constant temperature control.



### DATA LOGGER SYSTEM/ CLOUD RECORD

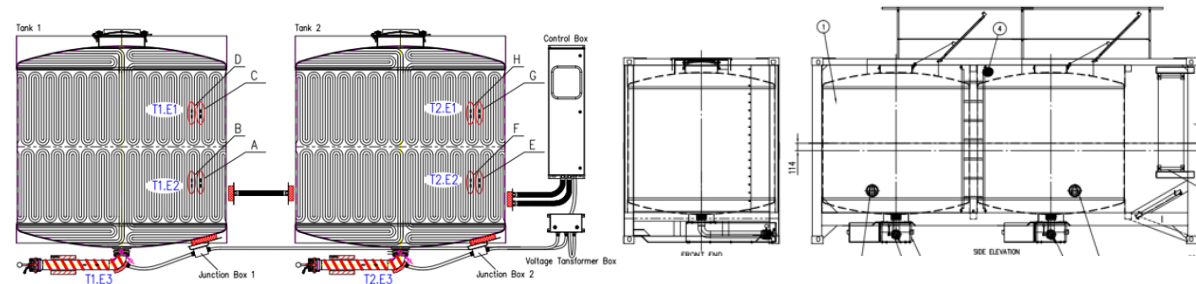
2/4 Channel data logger  
OR remote on-line monitoring



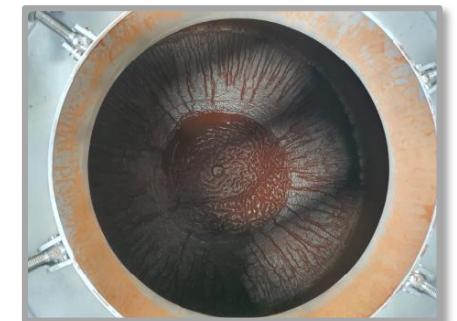
Heating Cables

## Liquid Chocolate, Delivered. Without Melting or Repacking.

- **Conical bottom** minimizes chocolate residue
- **Electric heating** prevents solidification during transit
- **Keeps chocolate liquid throughout the supply chain**—no cold storage, no melting, no packaging waste
- **Dual chambers** allow transport of **two products at once**
- **Functions as both a transport and storage tank**
- **Bottom-to-top circulation** ensures **smooth mixing and homogenization**



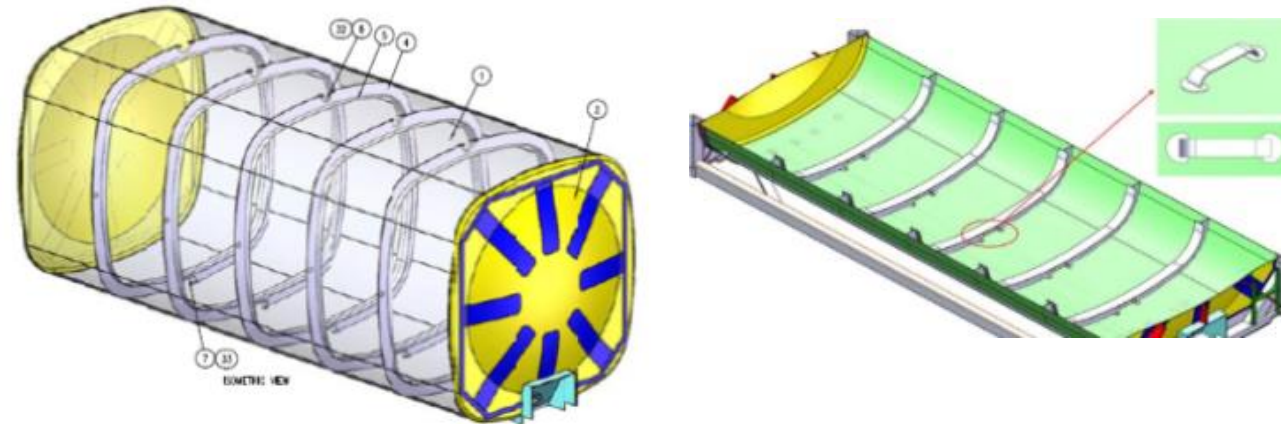
Residue in normal tank : ~ 2000L



Residue in Dual Tank : 0 ~ 50L

## Jumbo Tank: 35% More Capacity, Same Footprint

- **Reinforced square design** enables up to **35% more capacity (32,500 L vs 24,000 L)**
- Ideal for **low-density liquids** like vegetable oils
- Equipped with **aerogel insulation** for effective heating and heat retention
- **Smooth interior walls** improve cleanability and hygiene
- **Exterior stiffening ribs** preserve tank integrity **without compromising internal hygiene**



Reinforced Internal Ribs for Enhanced Structural Rigidity

## Jumbo Tank with Dual Heating: Rapid Melt, Minimal Energy

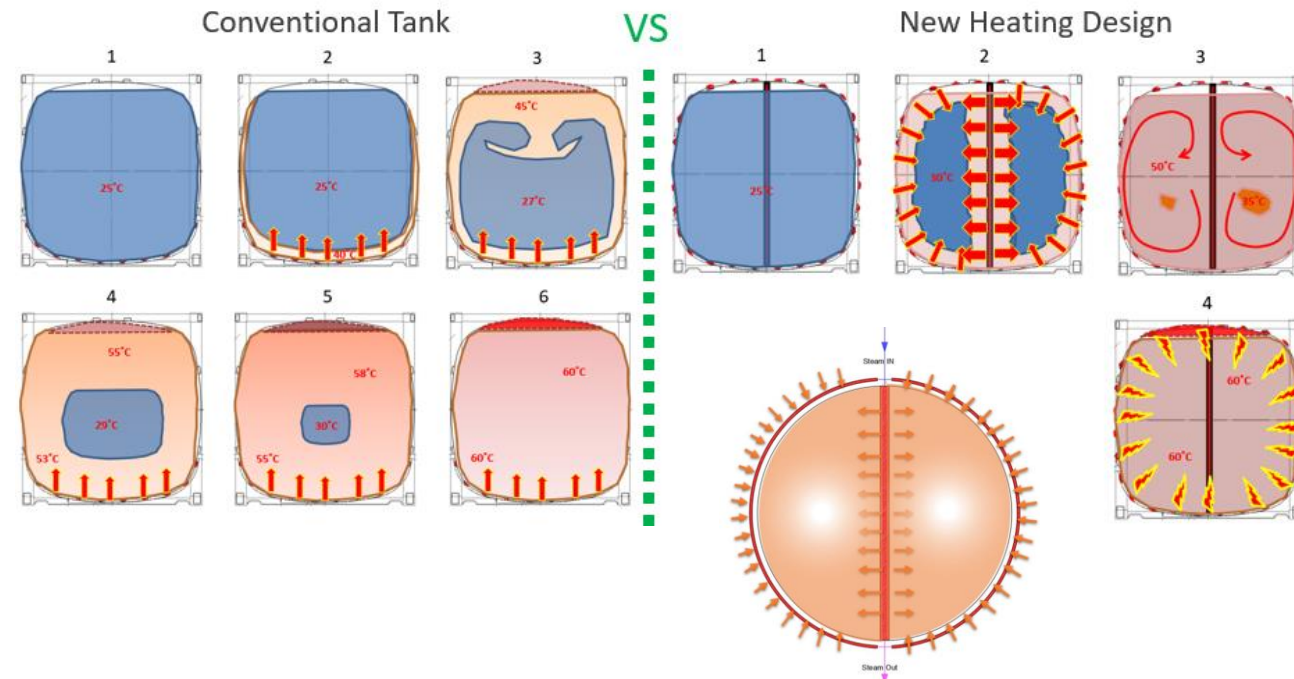
- **360° steam jackets + internal heating pipes** enable **fast and uniform melting**
- **Built-in electrical heating cables** maintain temperature with **minimal energy after melting**
- **Higher capacity** cuts transport cost and **CO<sub>2</sub> emissions**
- **Rapid heating** reduces **fuel use and turnaround time**
- **Electric hold mode** keeps product **stable until final delivery**



360° Steam Jackets for Rapid Melt

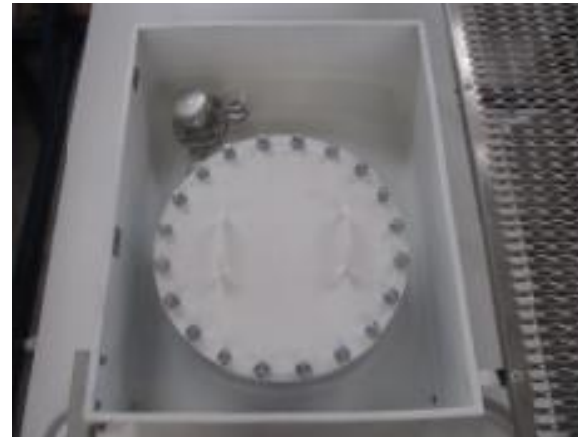
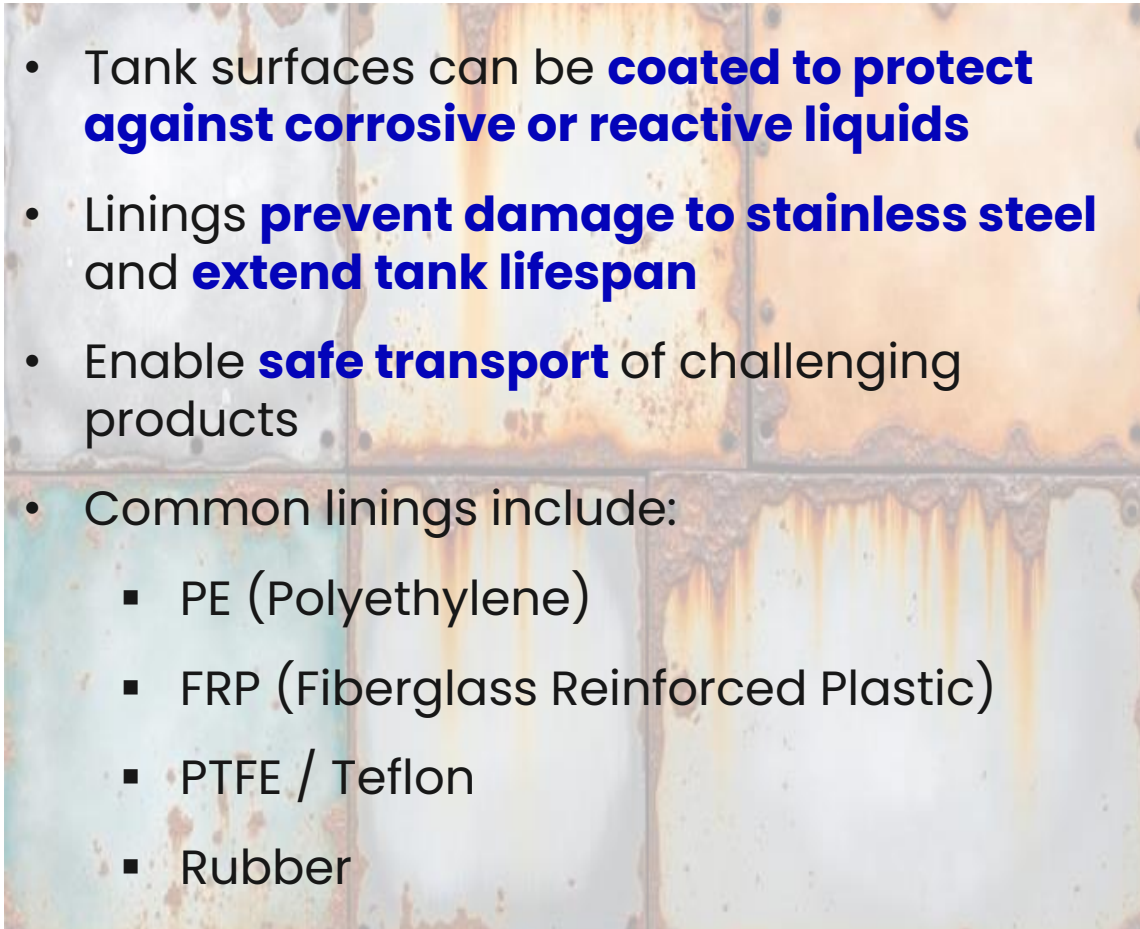


E-Heating to Maintain Heat



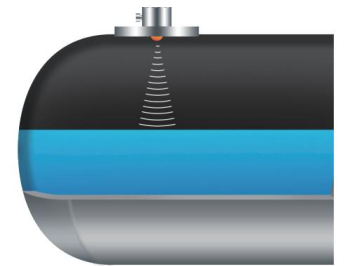
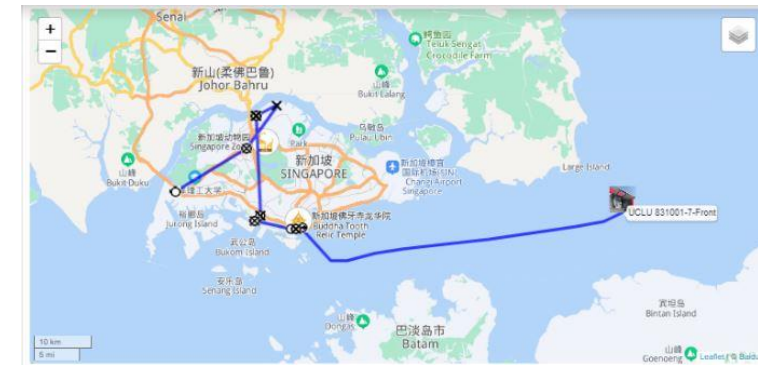
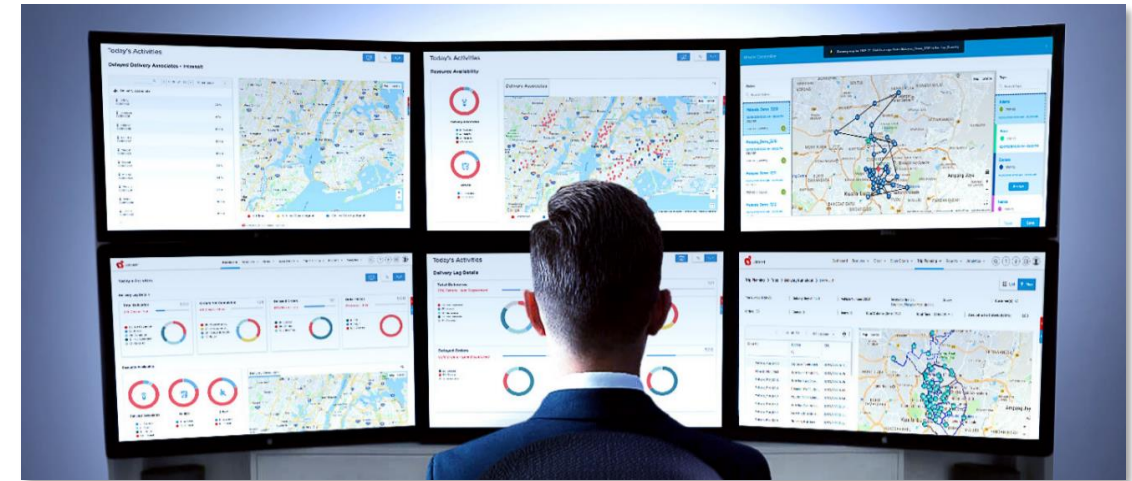
## Special-Lined Tanks for Aggressive Liquids

- Tank surfaces can be **coated to protect against corrosive or reactive liquids**
- Linings **prevent damage to stainless steel** and **extend tank lifespan**
- Enable **safe transport** of challenging products
- Common linings include:
  - PE (Polyethylene)
  - FRP (Fiberglass Reinforced Plastic)
  - PTFE / Teflon
  - Rubber

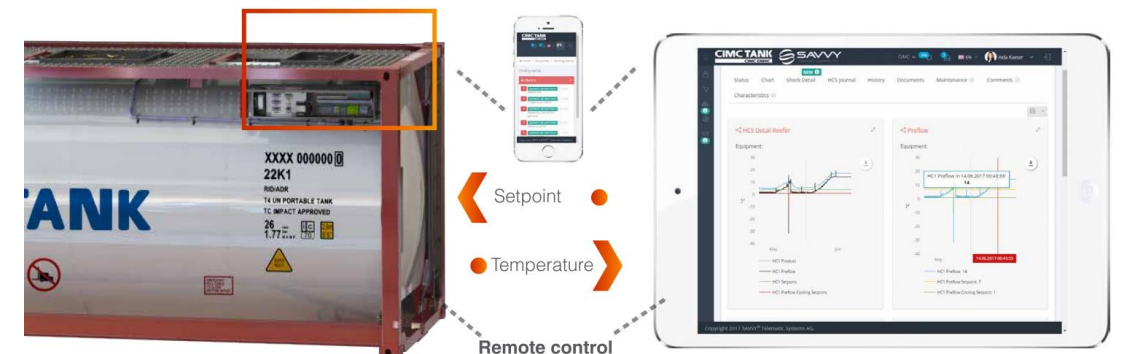


## Intelligent Telematics: Know Your Cargo, Wherever It Goes

- **Live data via GSM network: location, temperature, cargo level, shock/vibration, door status**
- **Remote control** of temperature settings at any time
- **Rechargeable battery: runs up to 30 days without external power**
- **Internal memory** stores logs for **offline backup**
- **Geofencing alerts** for **route deviation** or **unauthorized movement**
- **Real-time alerts via SMS/email** for **temperature deviation, impact, or unauthorized access**



Radar Level Gauge



**LET'S TALK**

# **Because Liquid Deserves Better Logistics**

Whether you're looking to scale sustainably, improve quality, or reduce waste—we're here to help.

Let's explore what we can build together.

**[yohei.ueno@orientaltanks.com](mailto:yohei.ueno@orientaltanks.com)**

**+65 81274777**

